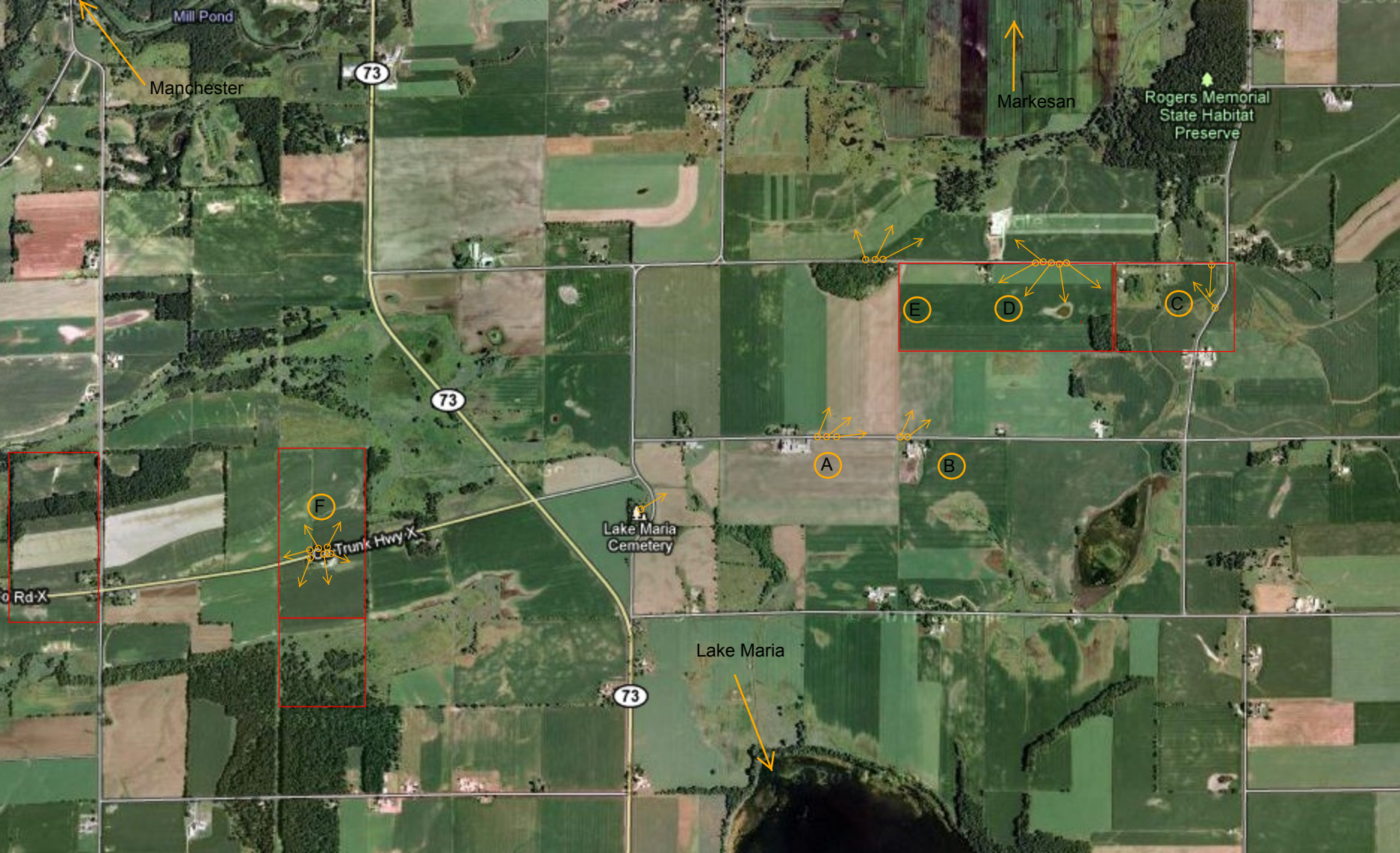




Property "C" located 1.5 miles south of Markesan

Rufus R. Langdon property in Green Lake County Wisconsin
1848 - 1882.



Mill Pond

Manchester

73

Markesan

Rogers Memorial
State Habitat
Preserve

73

E

D

C

A

B

F

308 Trunk Hwy X

Lake Maria
Cemetery

Lake Maria

73

Rd X



GROUP A: View to North - Northeast



GROUP B: View to North - Northeast



**GROUP C: View Northwest & South
(Rufus Land Patent 1848, Sold 1864)**



**GROUP D: View to South from East to West
(Mariah Langdon Patent 1848, Rufus R purchased from 1855)**



GROUP D: View West and Northwest



GROUP E: View North



GROUP F: View North from West to East
(Rufus R purchased 1864, Catherine sold 1882)



GROUP F: View South from East to West



**View Northeast from
Lake Marie Cemetery
Toward Views A,D, & E**



**View East
Lake Maria**