

**COUNTY SURVEYORS FILE DATA  
DO NOT REMOVE FROM OFFICE**

Tp. 23 S. R. 7 W.  
Sec. 20

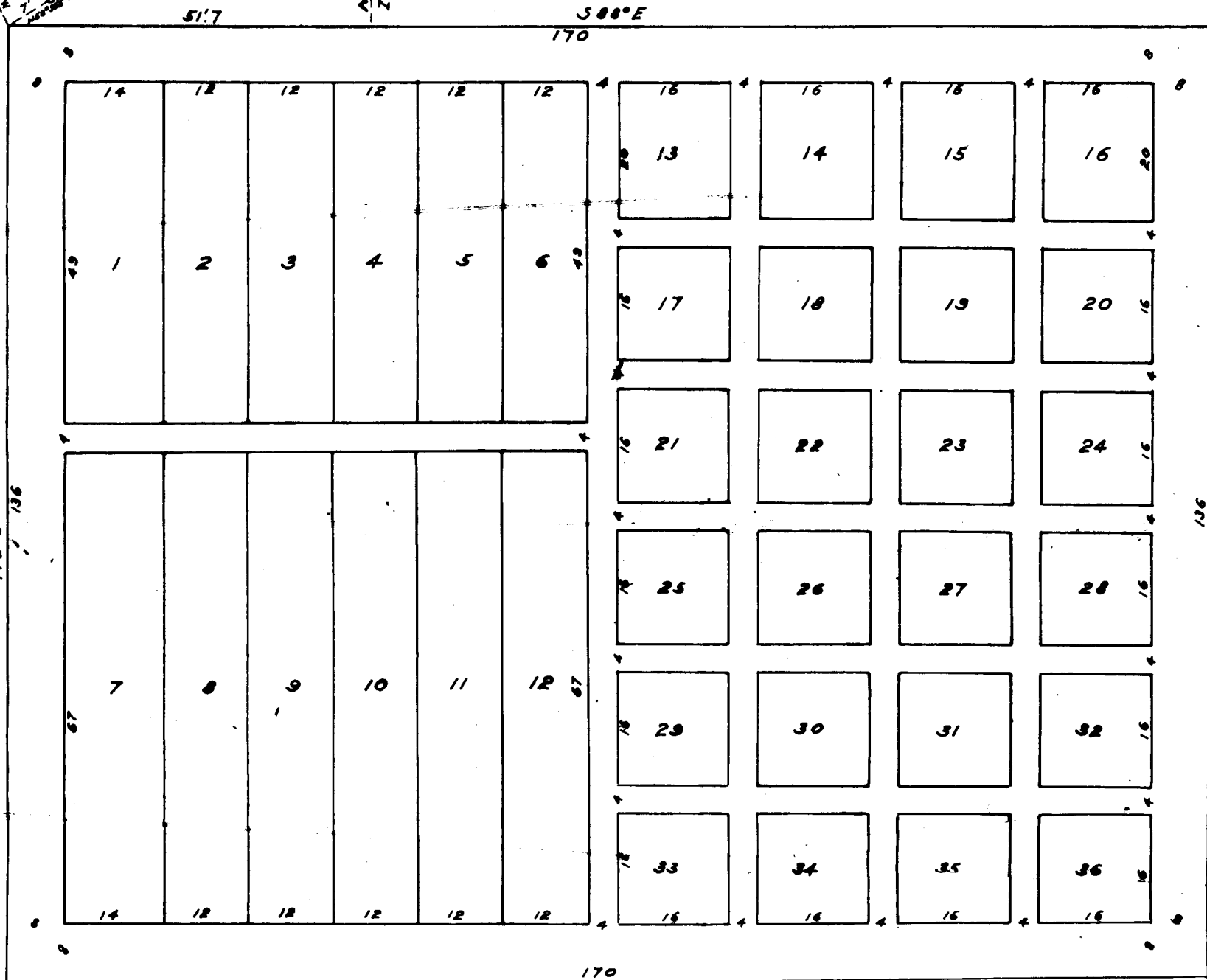
FILED ✓  
RECEIVED ✓

DEC 2 1974

COUNTY SURVEYOR  
DOUGLAS COUNTY, ORE.  
✓

o Forked W. Oak 12"  
W. Oak 12"

North 563' to N.E. Cor.  
Ziba Dimmick Dem. Cl. 45



# Dimmick Cemetery

C. S. File No. 58/21

R.W.FENN. C.E. Roseburg